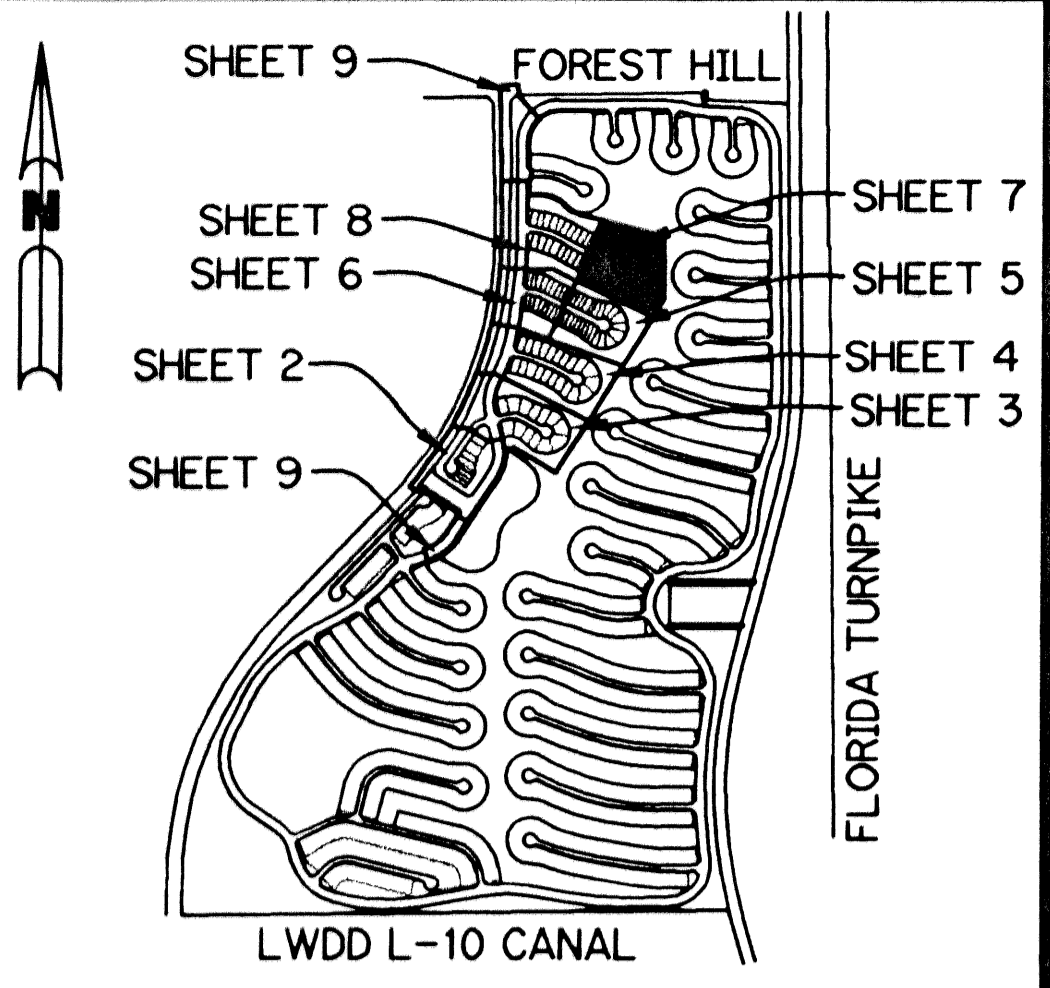


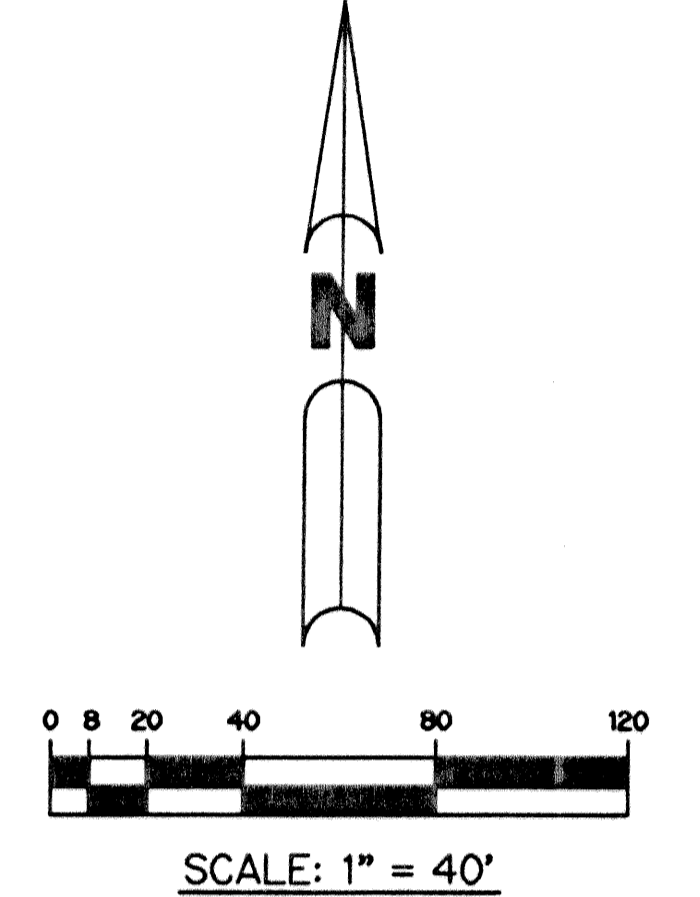
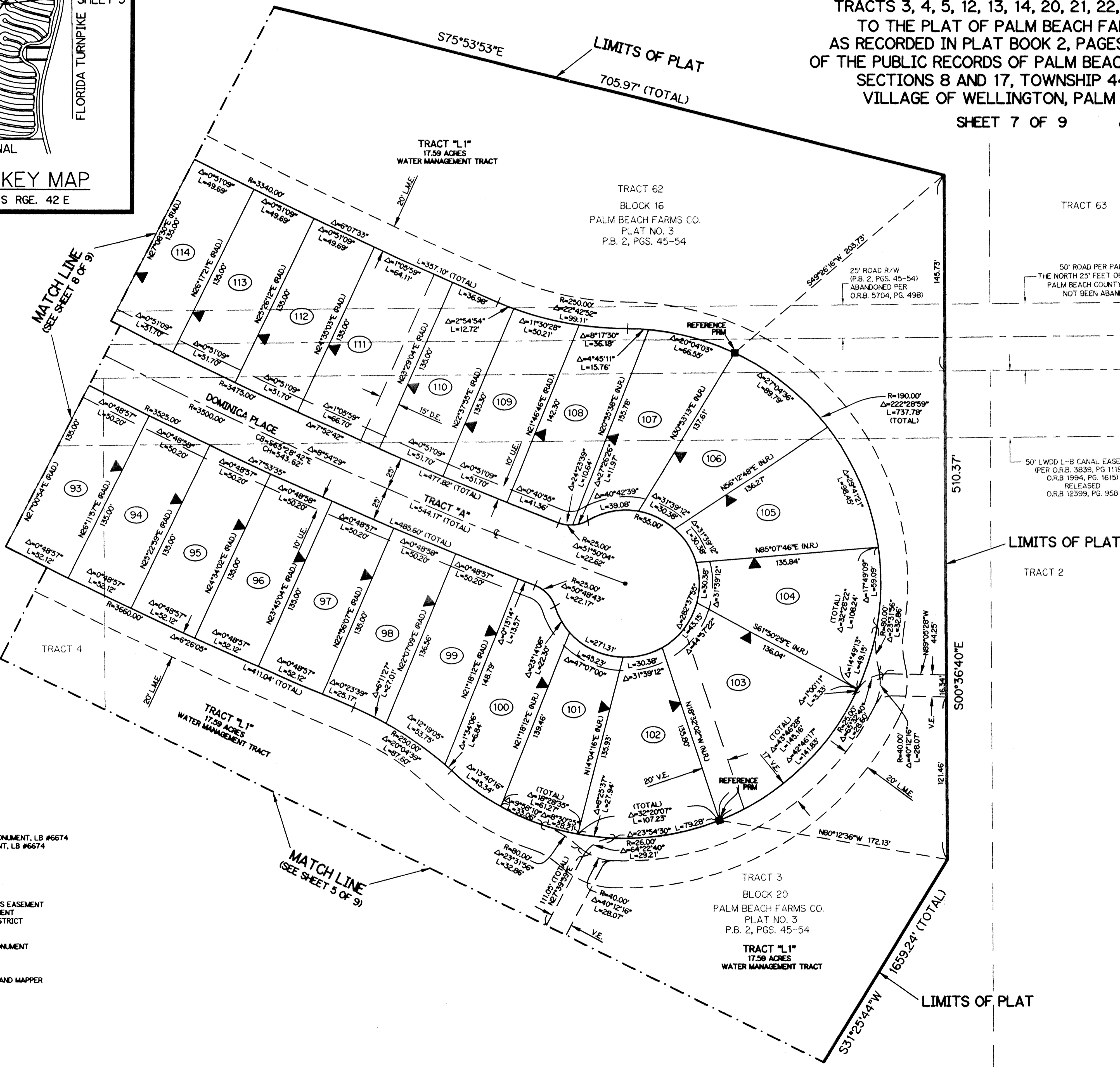
# VILLAGEWALK OF WELLINGTON - PLAT ONE

BEING A REPLAT OF A PORTION OF TRACTS 52, 61, 62, BLOCK 16 AND TRACTS 3, 4, 5, 12, 13, 14, 20, 21, 22, 28, BLOCK 20 ACCORDING TO THE PLAT OF PALM BEACH FARMS COMPANY PLAT NO. 3 AS RECORDED IN PLAT BOOK 2, PAGES 45 THROUGH 54, INCLUSIVE, OF THE PUBLIC RECORDS OF PALM BEACH COUNTY, FLORIDA. LYING IN SECTIONS 8 AND 17, TOWNSHIP 44 SOUTH, RANGE 42 EAST. VILLAGE OF WELLINGTON, PALM BEACH COUNTY, FLORIDA

SHEET 7 OF 9 JANUARY, 2002



LOCATION & KEY MAP  
SEC. 8 & 17 TWP. 44 S RGE. 42 E



- LEGEND:**
- - PERMANENT REFERENCE MONUMENT, LB #6674
  - - PERMANENT CONTROL POINT, LB #6674
  - Δ - DELTA ANGLE
  - L.S.E. - LIFT STATION EASEMENT
  - ⊖ - CENTERLINE
  - D.B. - DEED BOOK
  - D.E. - DRAINAGE EASEMENT
  - L - ARC LENGTH
  - L.M.A.E. - LAKE MAINTENANCE ACCESS EASEMENT
  - L.M.E. - LAKE MAINTENANCE EASEMENT
  - L.W.D.D. - LAKE WORTH DRAINAGE DISTRICT
  - N.R. - NOT RADIAL
  - N.T.S. - NOT TO SCALE
  - P.R.M. - PERMANENT REFERENCE MONUMENT
  - O.R.B. - OFFICIAL RECORD BOOK
  - P.B. - PLAT BOOK
  - PGS. - PAGES
  - P.S.M. - PROFESSIONAL SURVEYOR AND MAPPER
  - R - RADIUS
  - R/W - RIGHT-OF-WAY
  - S.T. - SURVEY TIE
  - U.E. - UTILITY EASEMENT
  - V.E. - VILLAGEWALK EASEMENT
  - B.E. - BUFFER EASEMENT
  - P.O.C. - POINT OF COMMENCEMENT
  - P.O.B. - POINT OF BEGINNING
  - RAD - RADIAL
  - CH - CHORD LENGTH
  - CB - CHORD BEARING
  - ◄ - INDICATES ZERO SIDE FOR BUILDING

THIS INSTRUMENT PREPARED BY  
DAVID L. SMITH, P.S.M. 4951, STATE OF FLORIDA  
LAWSON, NOBLE AND WEBB, INC.  
ENGINEERS PLANNERS SURVEYORS  
WEST PALM BEACH, FLORIDA